

Sakai



JA Sakai



2017



Neal Caidin, Sakai Community Coordinator, Apero Foundation

Apereo Foundation

- **Licensing Management**
- **Community Coordination**
- **Technical Infrastructure support**
- **Community Events**
- **Recognition Programs**
- **Banking, Accounting, Administration**
- **Incubation of new Open source projects**



Why a Foundation?

- **Share services = Cost Effective**
- **Manage Intellectual Property more easily than institutional management**
- **Assures future availability of software**
- **Cross pollination of ideas, broader and deeper community**





Sakai 11

- First released July 2016.
 - Three additional maintenance releases with hundreds of improvements (some features, many bug fixes).
 - One of the biggest releases in Sakai history. Close to 3,500 improvements (bug fixes and new features).
 - In the near future we are focusing on smaller releases to make it easier to upgrade and to smooth out Sakai.
-



Sakai Big Picture

- Better support for mobile (Sakai 11 was a quantum leap over Sakai 10, but more work needs to be done)
 - More beautiful, usable and consistent
 - A11y - Accessibility - WCAG 2.0 AA
 - I18n - Remains committed to support internationalization and localization efforts
 - Bug fixes, UI improvement, and helping make better software
-



NGDLE

- “Next Generation Digital Learning Environment”
 - Another name for it is LearningOS.org
 - More of a concept than a single tool. An LMS (learning management system, like Sakai) can be part of an NGDLE but it is not the NGDLE by itself.
 - Recommended reading - learningos.org and
 - <https://www.apereo.org/content/opinion-apereo-and-next-generation-digital-learning>
 - Sakai is component based and an IMS LTI leader
 - What is the role of open source and community as compared to commercial ventures?
-

NGDLE

Sakai

The logo for Sakai consists of the word "Sakai" in a bold, black, sans-serif font. Below the text is a blue graphic element consisting of three concentric, horizontal, slightly wavy lines that resemble a ripple in water.



Sakai Community

- Apereo FARM - Crowdsourcing features
 - SakaiCamp - grassroots. Sakai developers, instructional technologists, managers, get together and move Sakai forward.
 - Sakai Virtual Conference - 300 - 400 users online-sessions recorded
 - Sakai Marketing - figuring out ways to promote Sakai without any resources! (We are Open Source of course).
 - Incredibly active community, in addition to code contributions.
-

Sakai 11 - Features

Responsive Design (aka “Morpheus”)



- a) Mobile-ready navigation
 - b) Responsive design optimized for desktop, tablet, and mobile screens
 - c) Functional enhancements, including a breadcrumb navigation and a simplified process for managing favorites sites
 - d) Improved accessibility and screen-reader compatibility
 - e) Interface controlled by SASS (Syntactically Awesome Style Sheets)
 - f) Incorporates Bootstrap and Font Awesome libraries, making it easier than ever to develop new tools and customize them with these libraries.
-

Sakai 11 - Features

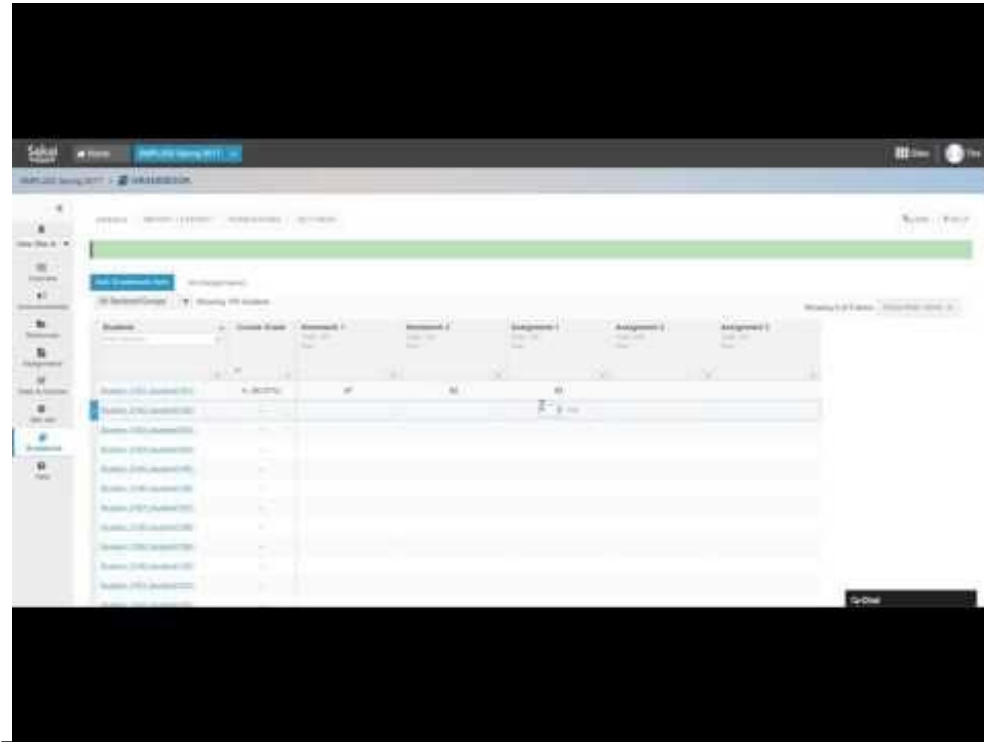


Redesigned Gradebook with spreadsheet entry form

- a. Spreadsheet-style grade entry
 - b. Automatic saving / score validation
 - c. Individual student Grade Summary screens, with integrated Student Review Mode
 - d. Simplified and consolidated Import/Export process
 - e. Enhanced statistics for graded items
 - f. Flexible display options for final course grades (letter grade, percentage, points)
 - g. Improved accessibility
 - h. Simplified settings screen
-

Sakai 11 - Features

Redesigned Gradebook with spreadsheet entry form



Sakai 11 - Features

Quick Help - courtesy of UNC - Chapel Hill

Grades Import / Export Permissions Settings

Add Gradebook Item All changes saved.

All Sections/Groups Showing 5 students Showing 10 of 10 items Show/Hide Items Group By Category

| Students | PID | Course Grade | Quizzes | Quiz 1 Total: 100 Due: - | Quiz 2 Total: 100 Due: - | Extra Credit Total: 10 Due: - | Exam 1 Total: 100 Due: - |
|-----------------------|-----|----------------|---------|--------------------------------|--------------------------------|-------------------------------------|--------------------------------|
| Student, 1 (userid_1) | | A (97%) | 110% | 95 | 100 | 10 | 100 |
| Student, 2 (userid_2) | | A+ (111%) | 111% | 102 | 90 | 9 | 90 |
| Student, 3 (userid_3) | | B (83%) | 88% | 68 | 80 | 8 | 80 |
| Student, 4 (userid_4) | | C+ (77%) | 77% | 65 | 70 | 7 | 70 |
| Student, 5 (userid_5) | | A (98%) | 98% | 92 | 60 | 6 | 60 |

You can choose to display Gb Items by Category or not and show/hide specific Gb Items and Categories

Eye icon means Course Grade is hidden

+ indicates extra credit

This bolded Course Grade has been overridden

+ means score is higher than Gb Item point value

Message bubble indicates comment added

Icons indicate Gb Item is hidden (eye) and not included in final grade (calculator)

Moving cursor to this section will make down-arrow appear to override student Course Grades

Sakai 11 - Features



User Selection and Favoriting of Sites

- a. “Star” a site to make it a favorite
- b. Change Management tip - this is a small change in the interface but a big change for users. Most users probably did not use Favorites in Sakai 10 and earlier, instead the most recent sites showed up automatically.

Sakai 11 - Features



The screenshot shows the Sakai 11 user interface. At the top, there is a navigation bar with the Sakai logo, a "Home" button, and several dropdown menus: "Sample Course", "Education Program Site", and "Discussion 1 SMPL101". On the right side of the navigation bar, there is a "Sites" button (highlighted with a red box) and a user profile icon labeled "Demo".

The main content area is partially obscured by a "Sites" drawer that is open. The drawer has a search bar at the top with the placeholder text "Search sites in this drawer". Below the search bar, there are three tabs: "Sites", "Organize Favorites (3)", and "Preferences".

The "Sites" tab is active and displays a list of sites organized by semester:

- Fall 2016**
 - ☆ DAC-EDUCATION-DEPT1-S ...
 - ☆ DAC-EDUCATION-DEPT1-S ...
- Summer 2016**
 - ☆ DAC-EDUCATION-DEPT1-S ...
 - ☆ DAC-EDUCATION-DEPT1-S ...
 - ☆ DEMO 100 100 Summer 2016
 - ★ Discussion 1 SMPL101
 - ☆ Discussion 2 SMPL102
 - ☆ Discussion 3 SMPL202
 - ★ Sample Course
- Spring 2016**
 - ★ Education Program Site
- OTHER**

The background of the main page shows a sidebar with navigation options like "Overview", "Profile", "Membership", "Calendar", "Resources", "Announcements", "Worksite Setup", "Preferences", "Account", and "Help". The main content area displays a "MESSAGE OF THE DAY" and a "Welcome to your p..." message.

Sakai 11 - Features

Lessons - multi-column and sections design without having to know any HTML!



- a. Simplified menu bar with categorized menu items
 - b. More concise instruction on the Lessons landing page
 - c. New functionality: section breaks and column breaks
 - d. **New page layout design possibilities (breaking content into multiple sections and columns)**
 - e. Multiple ways to add content items on the page
 - f. Style settings for column content areas
 - g. Enhancements to forum topics
 - h. **Enhanced student content areas and peer review rubrics**
 - i. Responsive design
-

Sakai 11 - Features


Lessons - multi-column example



Lessons

ADD CONTENT + MORE TOOLS REORDER TIPS

Print view Index of pages



Photographer: JSJR

Wildlife Conservation

Welcome to ECO301 Wildlife Conservation!

Wildlife traditionally refers to non-domesticated animal species, but has come to include all plants, fungi and other organisms which grow or live wild in an area without being introduced by humans. **Wildlife conservation** is the practice of protecting wild plant and animal species and their habitats. The goal of wildlife conservation is to ensure that nature will be around for future generations to enjoy and also to recognize the importance of wildlife and wilderness for humans and other species alike.

This course is designed for anyone who is interested in wildlife and its conservation for future generations. We will discuss regional and global issues in conservation, conservation common practices and the laws that are currently being enforced by regional and governmental agencies. Through readings, videos, discussions, and collaborative research projects, we will examine the effects of natural resource use and climate change on wildlife. It will be a fun and adventurous 5-week journey.

Please start by reading the Syllabus which is linked below. After finishing the Quick Poll, please go to the Forums to introduce yourself. Please tell us a bit about yourself. Who are you and why do you take this course? Do you have a favorite wild plant or animal? Is there other relevant information you want to share with the class? In the meantime, please go to [weekly pages](#) to review learning materials and complete weekly assignments.

Free free to ask questions in the Forums. Have a lovely day!

-Prof.D

Please review the Syllabus first:

- [ECO301 Syllabus.pdf](#)

Please go to the Forums to introduce yourself.

Introduction

Tell us a bit about yourself. Who are you and why do you take this course? Do you have a favorite wild plant or animal? Is there other relevant information you want to share with the class? Besides text, you can use pictures, audio, and/or video if you like.

Quick Poll: Among the following choices, which one is the most endangered wildlife species? It's OK if you don't know. This is a kick-starter question to get you going.

- Indian Elephant
- Blue Whale
- Black Rhino
- Panda
- Polar Bear
- I have no idea

Submit Answer Show Poll

Week 1 & 2

Week 3 & 4

Week 5 & 6

Week 7 & 8

Sakai 11 - Features

Samigo - core Test and Quiz tool



- a. Exceptions for students or groups on delivery times for assessments
 - b. New question type: Image Map (aka HotSpot) [image]
 - c. New reporting capability: the ability to see all assessment submissions for a student [image]
 - d. New side panel that allows students to track question progress on an assessment [image]
 - e. Improvements in Question Pools management
 - f. Option for instructors to hide point value of questions to students
 - g. Improvements to email receipts and notifications
 - h. New Markup text export feature
 - i. Honor pledge option , like in Assignments tool
 - j. Show/Hide Rich Text Editor for all questions when Authoring
-

Samigo - Exceptions for Groups and Individual Students



| Existing Exceptions | | | | | | | | | |
|---------------------|--------------|-------------------------|-------------------------|-------------------------|-------|---------|----------------------|------------------------|--|
| User | Group | Start Date | Due Date | Retract Date | Hours | Minutes | Edit | Delete | |
| Student, 0015 | Select Group | 2017-Mar-03 02:30 PM | 2017-Mar-04 02:30 PM | 2017-Mar-04 05:00 PM | 0 | 30 | Edit | Delete | |
| Select User | Group 2 | 2017-Mar-02 02:35 PM | 2017-Mar-06 05:00 PM | 2017-Mar-06 05:15 PM | 2 | 0 | Edit | Delete | |



Samigo - Image Map Question Type

Student view asking to identify one part of the heart by clicking on it. Multiple parts can be requested on one question.

Hot Spot Items

Item 1 Aorta

[Reset Selection](#)

Hot Spot Image

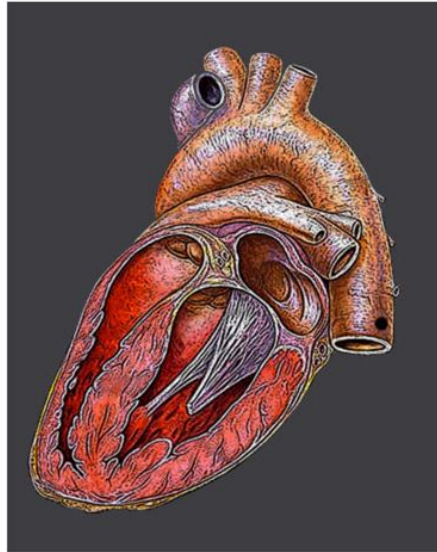
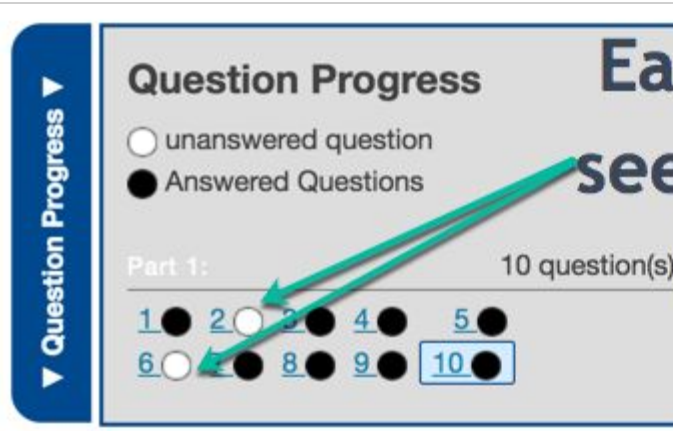


Image license:
[CC BY-SA 2.5](#)

Author:
Heikenwaelder Hugo,
Austria,
heikenwaelder@aon.at,
www.heikenwaelder.at

Samigo - Student Question Tracking



Easy for student to see which questions he has not yet completed



Sakai 11 - Features



Calendar tool

Subscribe from your personal calendar to see Sakai events.



Sakai 11 - Features



PA System - New Tool !

The PA System provides Sakai administrators with the ability to deliver timely alert banners and popups system-wide or to targeted sets of users within their Sakai instance. From simple banners at the top of the interface to fully customizable popup notifications, this system provides system admins with new and powerful ways to keep their users informed.

Sakai 11 - Features

PA System - New Tool !



A screenshot of the Sakai 11 Administration Workspace interface. The main content area is titled "PA SYSTEM" and contains several sections: "Banners" with a message about course sites, "Popups" with a description for "Popup 2", and "Timezone Check" with a status of "Timezone checking is active". A modal popup window is open in the center, titled "Popup Title". It features a purple header bar, a paragraph of placeholder text, an image of a computer monitor displaying a data table, another paragraph of placeholder text, and two buttons at the bottom: "Don't show this again" and "Remind me later". The background interface is dimmed, showing navigation menus on the left and right.

Sakai 11 - Features

Contact Us (aka Feedback tool) - New Feature

Helps with system support.

Configurable. Provides powerful feedback functionality for every course/project site. By offering up to four different contact pathways within a single form, users can quickly and easily direct their questions/feedback to the correct individual/group. And with one click, the Contact Us tool can send an email to an institution's helpdesk, with all relevant info automatically included (e.g., site URL, username, browser and version, plugins installed, etc.).



Sakai 11 - Features

Contact Us - New Feature



Problem with content?

- Site unavailable or permission denied?
- Missing file, broken link, or blank page?
- Problem with dates in calendar?
- Erroneous or misleading information?
- General query about the site?

[Report the problem to the site owner](#)

Ask for help?

- Cannot log in?
- How can I do this?
- Cannot find the answer in the Help pages?

[Report the problem to the Sakai team](#)

Report a technical problem?

- Something has gone wrong?
- Problem with the system?
- Tool not working as it should?

[Report the problem to the Sakai team](#)

Suggest improvement

- Voice a request for an improvement to one of the tools
- Suggest a brand new feature that would be useful to other users

[Make a request for improvement](#)

Configurable



Sakai 11 - Features



Mathematical Notation - support of LaTeX on most areas and tools of Sakai

Designed to present mathematics natively, Sakai 11 can now display LaTeX equations as mathematical notation on most pages. Using new LaTeX options, user can simply write LaTeX in an enabled tool and the resulting equation will be displayed beautifully. LaTeX updates include:

- Identical output for all browsers and platforms
 - No images or special browser plugins required
 - Accessible, with screen-reader compatibility
 - Scalable font for different text sizes and zoom levels
-



More on Sakai 11

Overview - <http://www.sakaiproject.org>

Confluence pages -

<https://confluence.sakaiproject.org/pages/viewpage.action?pageId=106791772>

Jira filter (all bug fixes and enhancements) -

<https://jira.sakaiproject.org/issues/?filter=15588>



More on Sakai 11

Blog posts about Sakai 11

- <https://www.sakaiproject.org/news/20160830-announcing-release-sakai-11>
 - <https://www.unicon.net/about/blogs/sakai-11-features>
 - <https://blogs.it.ox.ac.uk/adamweblearn/2015/06/sneak-preview-of-weblearn-sakai-11/>
 - <http://oithelp.nd.edu/course-management/sakai/sakai-11/>
 - <https://blogs.it.ox.ac.uk/adamweblearn/2015/06/sneak-preview-of-weblearn-sakai-11/>
-



Sakai 12

- “Timebox” - primarily driven by schedule.
 - Scope - in general items that don’t make it into Sakai 12 will either be in a maintenance release (12.1, 12.2, etc) or targeted into Sakai 13. May mean that it is a smaller scope functionally than Sakai 11, but that doesn’t mean it is not significant!
 - Should you upgrade to Sakai 11 or Sakai 12?
 - Sakai 12 will more easily accept improvements from Sakai 13 (aka backporting)
-

Sakai 12 - already in or likely to be in



- Continue to improve user interface
 - Bullhorns - academic and social notifications
 - Samigo Test and Quiz Extended Delivery
 - Continued progress on Accessibility (A11y)
 - Hibernate / infrastructure updates
 - New UI for students to see their enrollments even for course sites which are not published
 - Download files in Resources into a local Zip file.
 - Notify student when instructor comments on
Assignment
-



Sakai 12

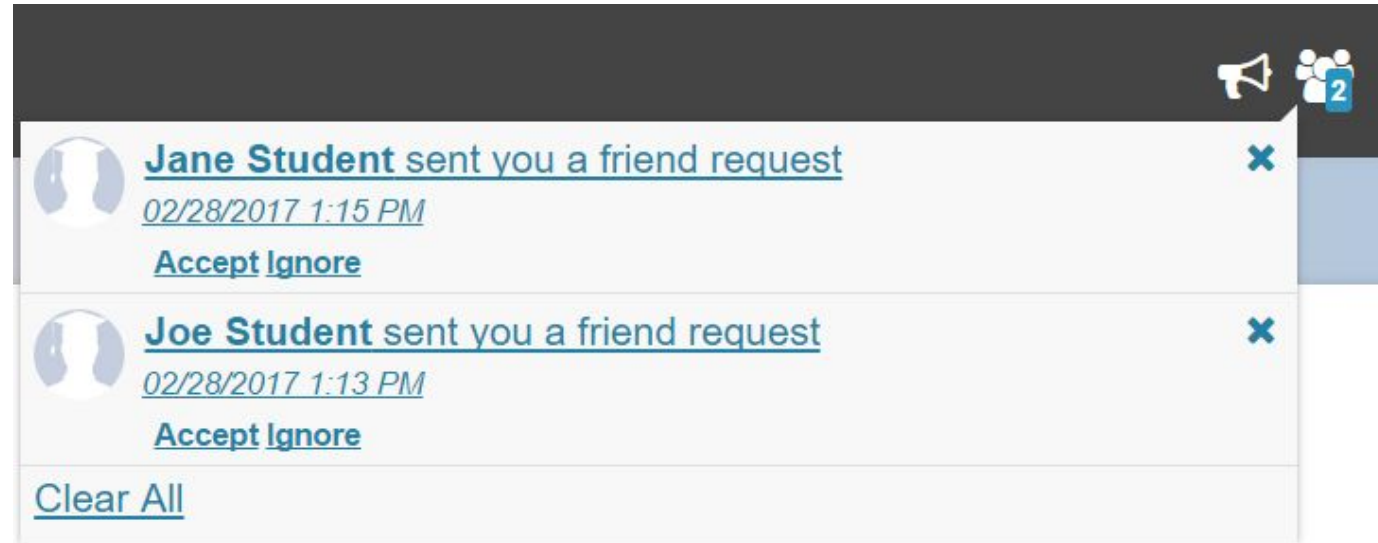
- Bullhorns - social notifications





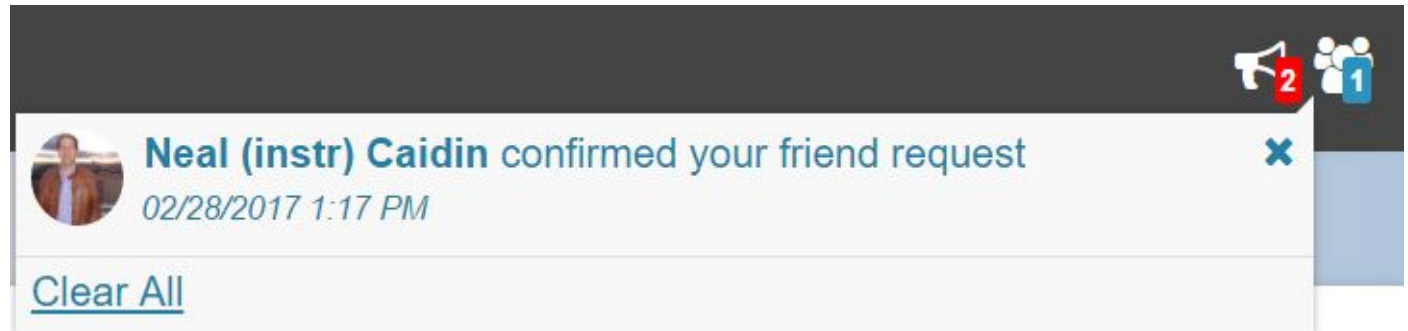
Sakai 12

- Bullhorns - social notifications



Sakai 12

- Bullhorns - social notifications - confirm friend request



Sakai 12

- Bullhorns - academic notifications (student view)

A screenshot of the Sakai Bullhorns notification interface. The interface has a dark grey header bar with a megaphone icon and a red notification badge with the number "2", and a group of people icon with a blue notification badge with the number "1". Below the header, there are two notification items. The first item features a document icon, the text "Neal (instr) Caidin created a new assignment 'Primary materials' in 'HISTORY 100 01 Spring 2017'", and a timestamp "02/28/2017 2:28 PM". The second item features a megaphone icon, the text "Neal (instr) Caidin added a new announcement 'Welcome to History 100' in 'HISTORY 100 01 Spring 2017'", and a timestamp "02/28/2017 2:27 PM". At the bottom of the notification list is a "Clear All" link. A mouse cursor is visible over the "Clear All" link. Each notification item has a small blue "x" icon in the top right corner for closing the notification.

Neal (instr) Caidin created a new assignment "Primary materials" in "HISTORY 100 01 Spring 2017"
02/28/2017 2:28 PM

Neal (instr) Caidin added a new announcement "Welcome to History 100" in "HISTORY 100 01 Spring 2017"
02/28/2017 2:27 PM

[Clear All](#)



Beyond Sakai 12

- Features that don't make it into Sakai 12 will go into Sakai 13 and they may be backported into a Sakai 12 maintenance release.
 - Rubrics - integrated in Gradebook
 - Tagging Service - starting with Samigo Test and Quizzes
 - Continued work on Accessibility to work towards WCAG AA certification (aka "Ra11y project").
 - Continued work on Responsive design improvements (aka. "Morpheus")
 - More attractive skin design
 - Other features and improvements
-
- App Store ?



Accessibility Statement for 12

Sakai is developed to meet or exceed all accessibility design principles found in recognized international standards. Our goal is to meet all of the W3C Web Content Accessibility Guidelines

(WCAG) 2.0 Level A and AA Success Criteria. We also use emerging standards and best practice design techniques (such as the WAI-ARIA Suite) that support existing and emerging adaptive technologies.

The Sakai community conduct and document usability and accessibility evaluations on Sakai to ensure it meets the accessibility goals set by the community.



Accessibility

- Working towards WCAG 2.0 AA compliance for Sakai
 - Current focus on ARIA roles
 - Is this a meaningful standard for the Japanese community with respect to accessibility issues?
-



Apereo FARM

- Crowdsourcing of great ideas
 - Improve existing projects like Sakai or other Apereo projects
 - Go from idea -> voting -> collaborating
 - FARM is an optional way to add features
 - FARM group is supportive
 - Apereo Lightning Talks is one result
 - <http://farm.apereo.org>
 - Gradebook, Rubrics, WCAG AA Accessibility examples in progress or completed
-



Apereo FARM - Example ideas

- Modernize the Forums tool - 8 votes
- Posting Assignments relative to course start date - 7 votes
- Reusable shareable Lessons - 6 votes

(As of 28 February 2017)

- Need leadership and resource gathering
 - Grassroots effort
-



Contributions

- Translations
 - Source code contributions
 - QA (Quality Assurance) testing
 - Help documentation
 - Paying a commercial affiliate to fix an issue or add an improvement and plan for them to contribute it back to community source
 - Asking and Answering questions on lists
 - Apereo membership
-